

Ontario Long Term Care: Current Need and Future Direction

Presentation to the Ontario Health Coalition Conference:
Reforming Long Term Care Homes in the Public Interest
Re-Visioning Long-Term Care Panel Discussion

October 28, 2016

Dan Buchanan, Director of Financial Policy

(dbuchanan@oanhss.org)

Ontario Association of Non-Profit Homes and Services for Seniors

www.OANHSS.org



OANHSS

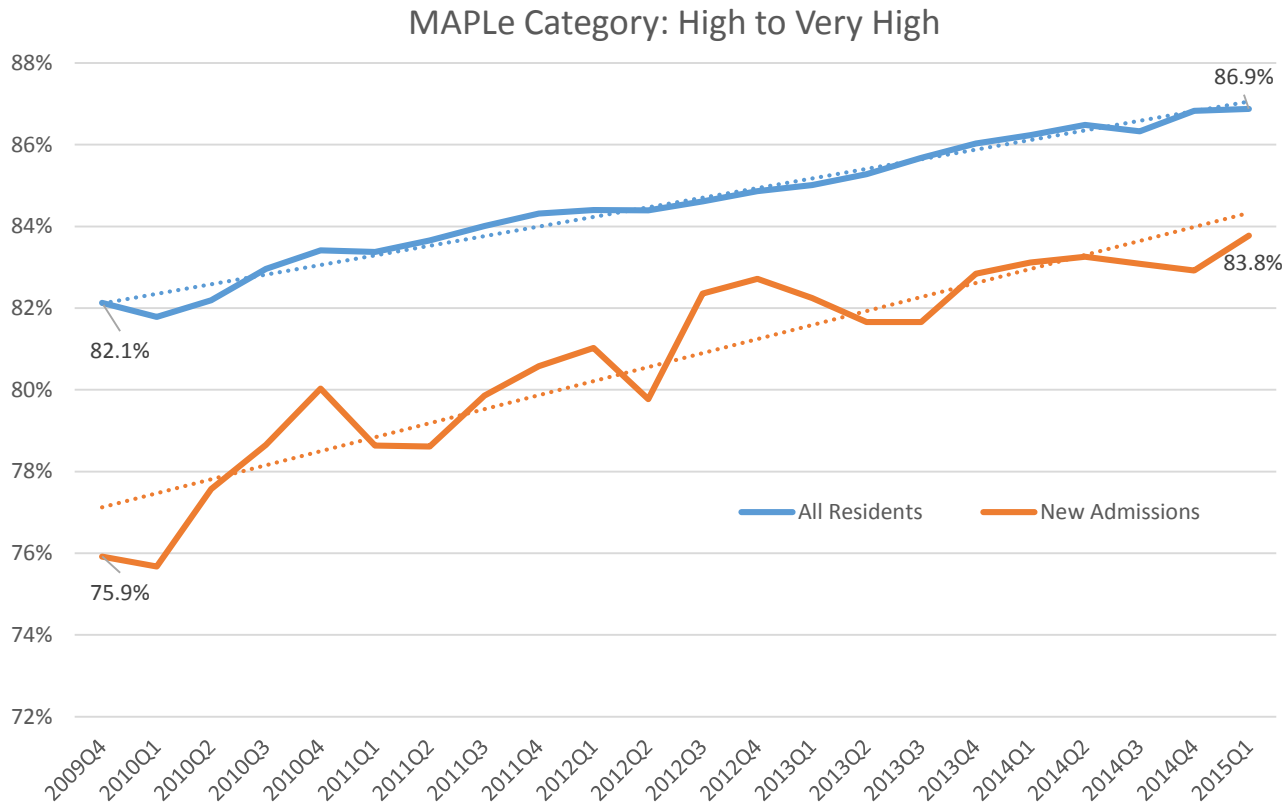
ONTARIO ASSOCIATION OF NON-PROFIT HOMES AND SERVICES FOR SENIORS

Presentation Outline

- Resident Acuity
- Immediate Need
- Capacity Planning and Development



Acuity – MAPLe Scores

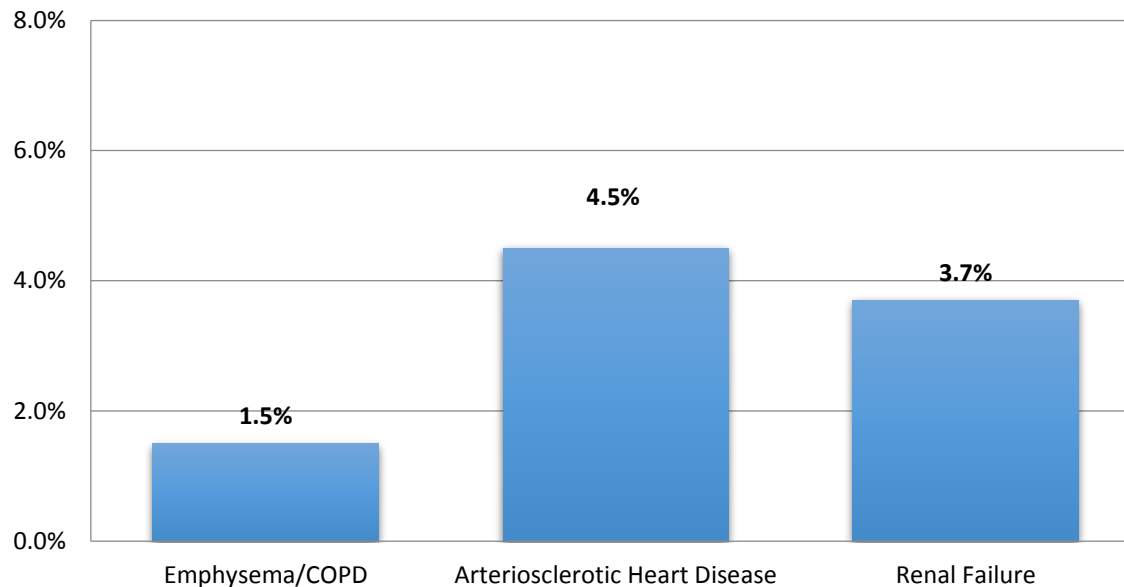


Source: CCRS, RAI-MDS Quarterly, January 1, 2010 to June 30, 2015.



Acuity – Increase in Chronic Disease

**Annual Growth Rates in Chronic Diseases
Ontario LTC Residents
(Average, Jan 1, 2010 to June 30, 2015)**

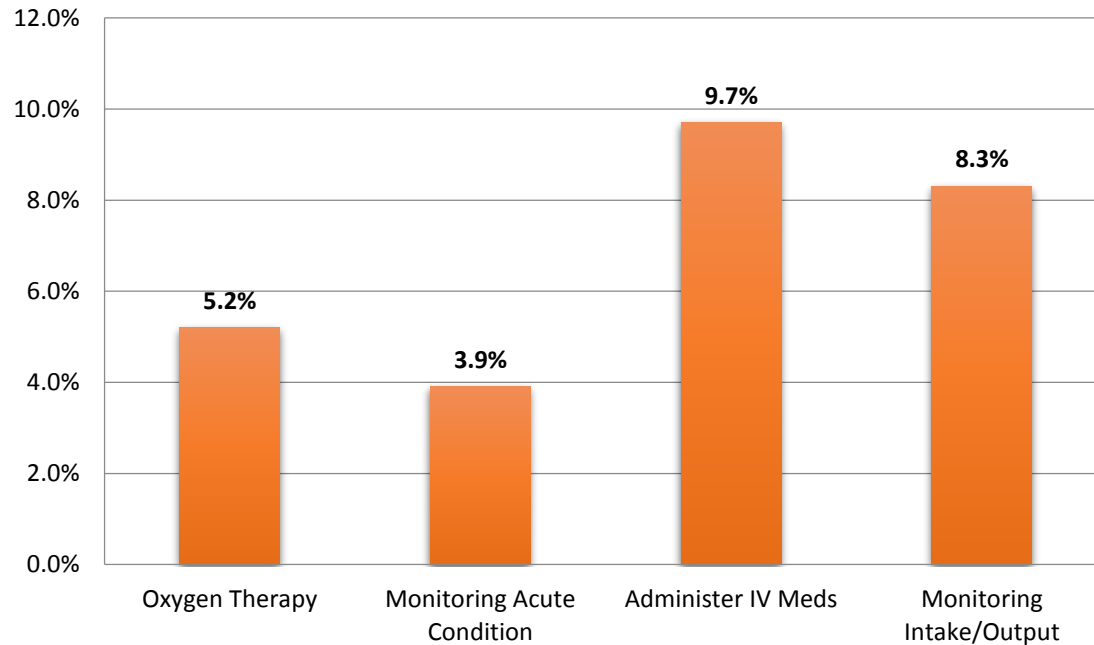


Source: CCRS, RAI-MDS Quarterly, January 1, 2010 to June 30, 2015.



Acuity: Increase in Labour Intensive Care

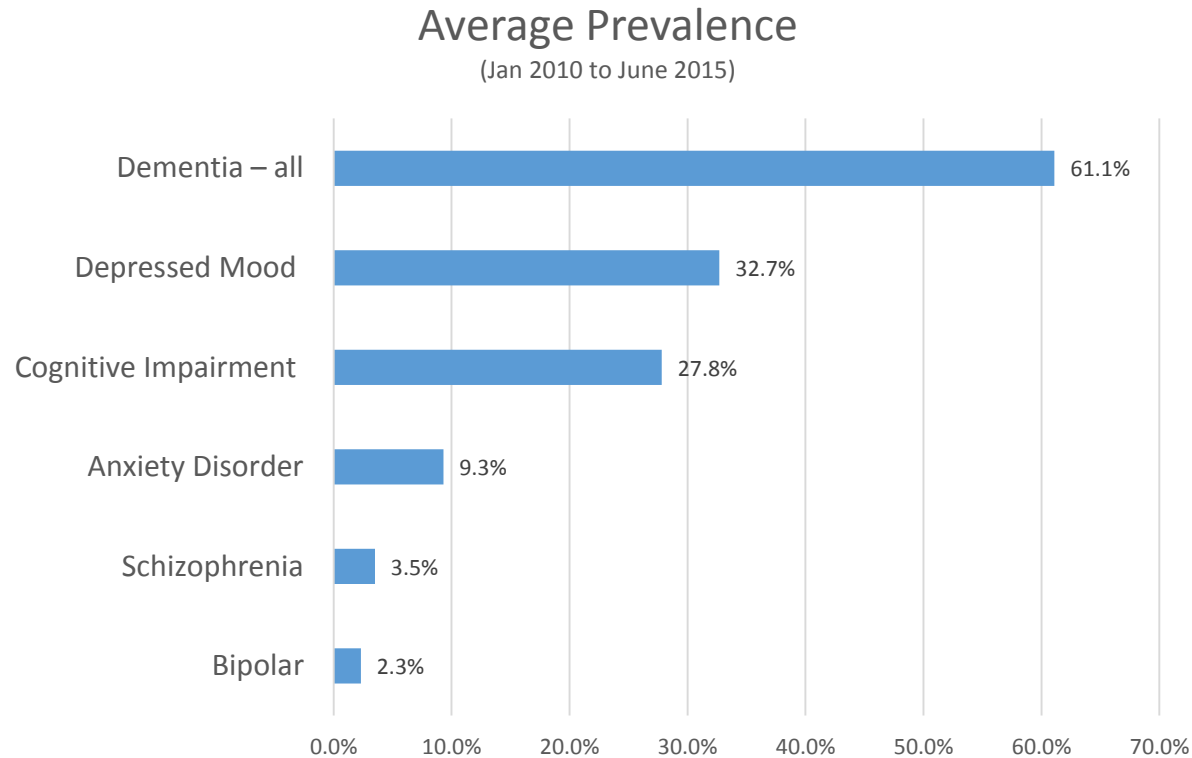
**Annual Increase in Labour Intensive Care
(Average, Jan 1, 2010 to June 30, 2015)**



Source: CCRS, RAI-MDS Quarterly, January 1, 2010 to June 30, 2015.



Acuity: Prevalence of Dementias and Psychiatric Conditions

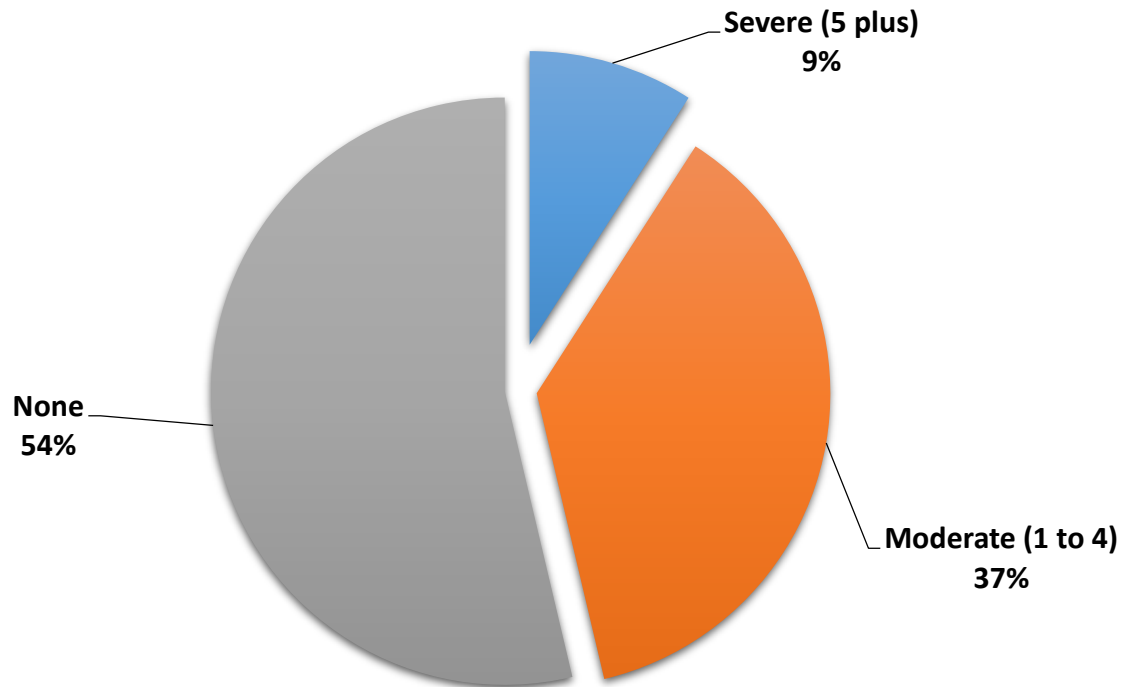


Source: CCRS, RAI-MDS Quarterly, January 1, 2010 to June 30, 2015.



Acuity: Responsive Behaviours

**Aggressive Behaviour Scale (ABS) Ratings
Ontario LTC Resident Population
(Quarter 1, FY2015-16)**



Source: CCRS, RAI-MDS Quarterly, January 1, 2010 to June 30, 2015.



Immediate Needs

- Provincial Average of 4.0 Hours of care
 - Current average about 3.44 hours (approx. 35 minutes short)
- Improved Dementia Care
 - In-home Behaviour Teams
 - 12 more specialized behaviour units
 - Focused study on dementia care needs.
- Other LTC Needs
 - Food
 - Minor Capital, Repairs and Equipment



Current Capacity

Long Stay Beds	Homes	Beds	Average Home Size
For Profit	362	42,337	116
* Non-Profit	161	19,695	130
Municipal	104	16,447	158
Total	627	78,519	127

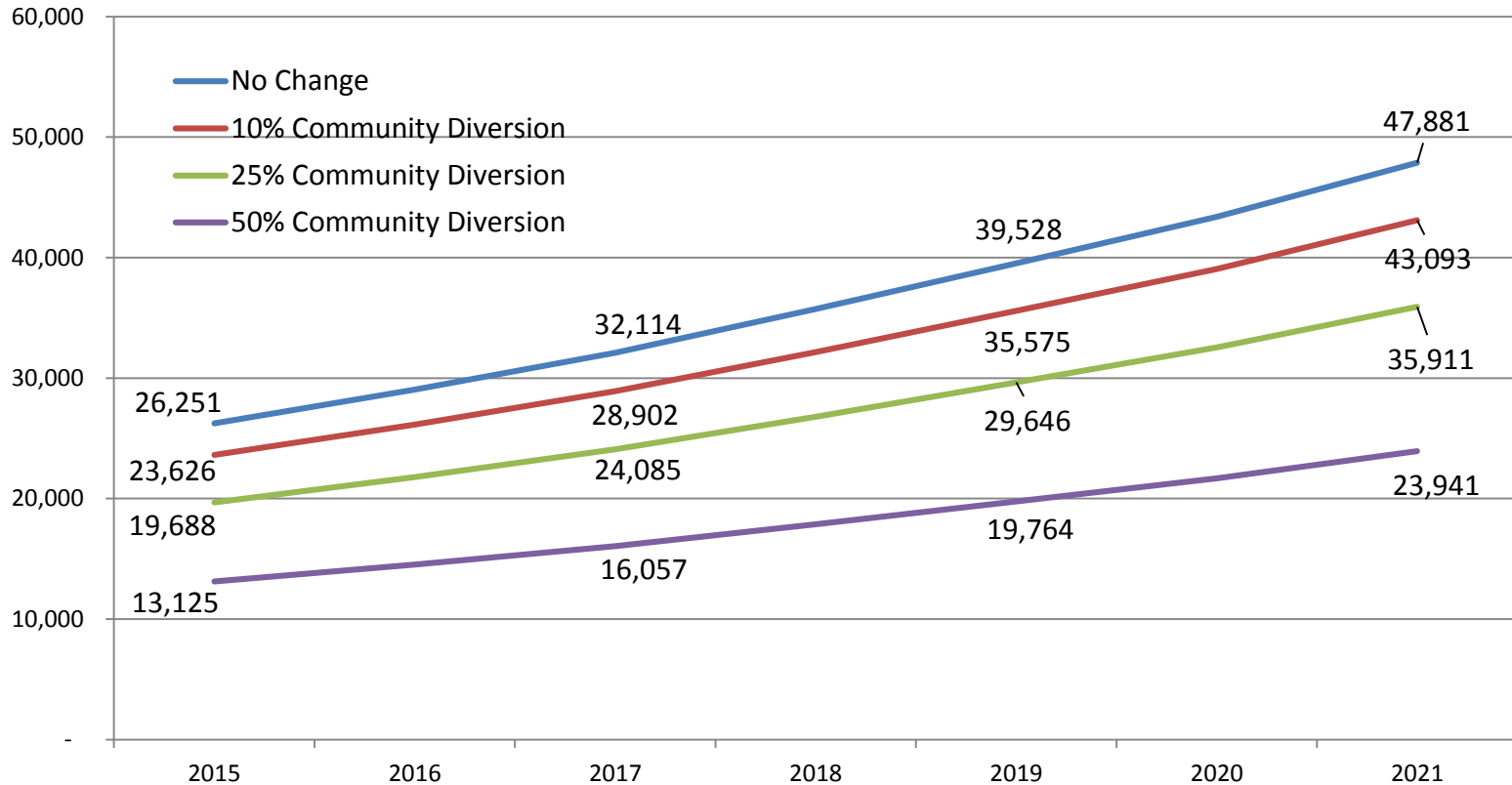
* Non-Profit includes ELDCAP 15 homes with 264 beds.

LTC System Report for December 2015.



Future Demand

Waitlist for LTC: Impact of Increasing Community Diversion



Source: OANHSS projections. 2014.



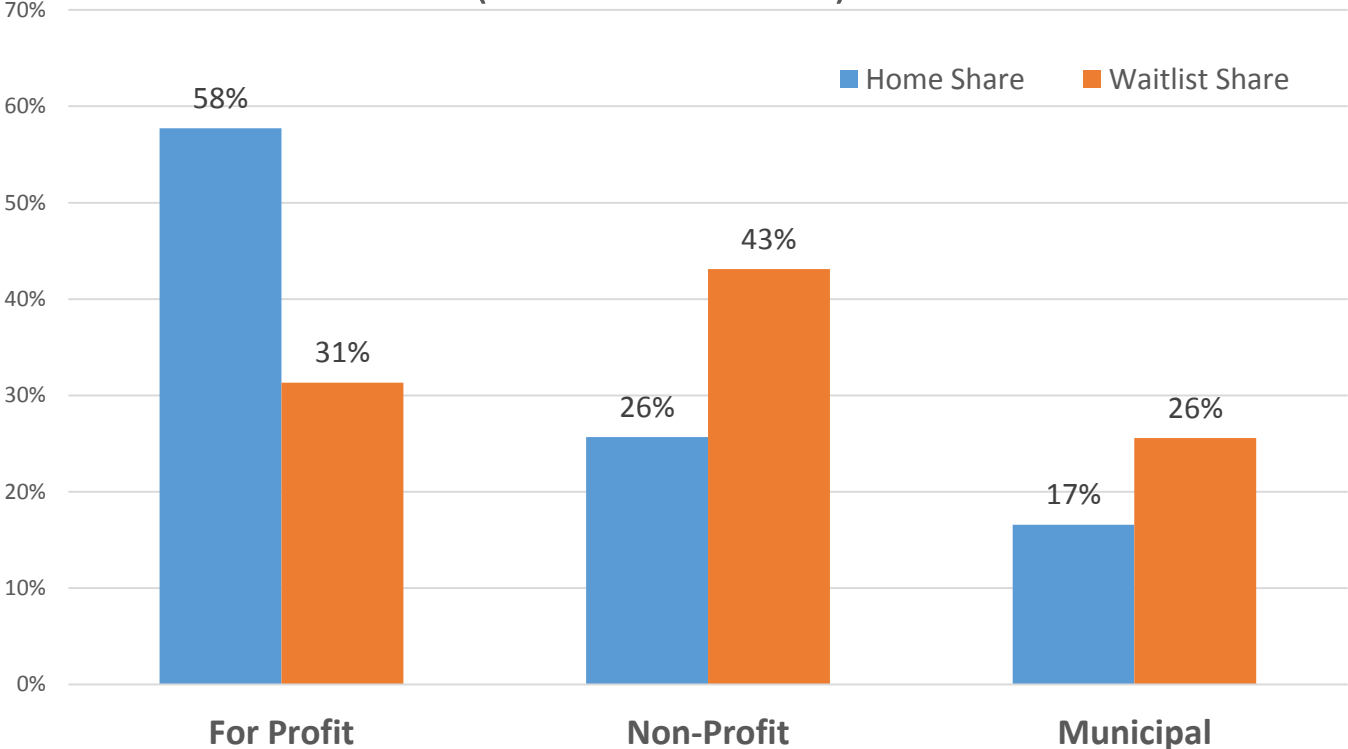
Future Need

- MOHLTC doing capacity planning for continuing care
- Also dementia care capacity planning under the auspices of the dementia strategy.
- OANHSS to promote seniors hubs / campuses of care and LTC community outreach.
- Need for more beds will remain.



Consumer Preference

Ontario LTC Waitlist Preference by Ownership (December 2015)



Source: OANHSS calculations from MOHLTC LTCH System Report for December, 2015

Questions



OANHSS

ONTARIO ASSOCIATION OF NON-PROFIT HOMES AND SERVICES FOR SENIORS